

185	244	311
186	245	312
187	246	313

- Sewer Main**

 - Sewer : Other
 - Combined: Existing
 - Combined: Proposed
 - Combined: Abandoned
 - Sanitary: Existing
 - Sanitary: Proposed
 - Sanitary: Abandoned
 - Storm: Existing
 - Storm: Proposed
 - Storm: Abandoned

Sewer Manhole

 - Combined
 - Sanitary
 - Storm
 - Storm Inlet
 - Flow Monitor

Sewer Blind Connect

 - Combined
 - Sanitary
 - Storm

Sewer Main Change

 - Combined
 - Sanitary
 - Storm

Sewer Pipe End

 - Headwall
 - Not Delivered
 - Plain
 - Unknown
- Sewer Clean Out**

 - Combined
 - Sanitary
 - Storm

Sewer Flow Regulator

 - Combined
 - Sanitary
 - Storm

Sewer Pump Station

 - PS Sanitary
 - PS Storm

DOSD BMP Locations

 - DOSD BMP Locations

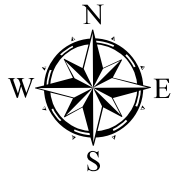
Sewer Structure

 - Sewer Structure
 - Sewer Sluice Gate
 - Sewer Flap Gate
 - Sewer Outfall
 - Sewer Bulkhead
 - Sewer Treatment Plant
 - WCLPP Line Of Protection

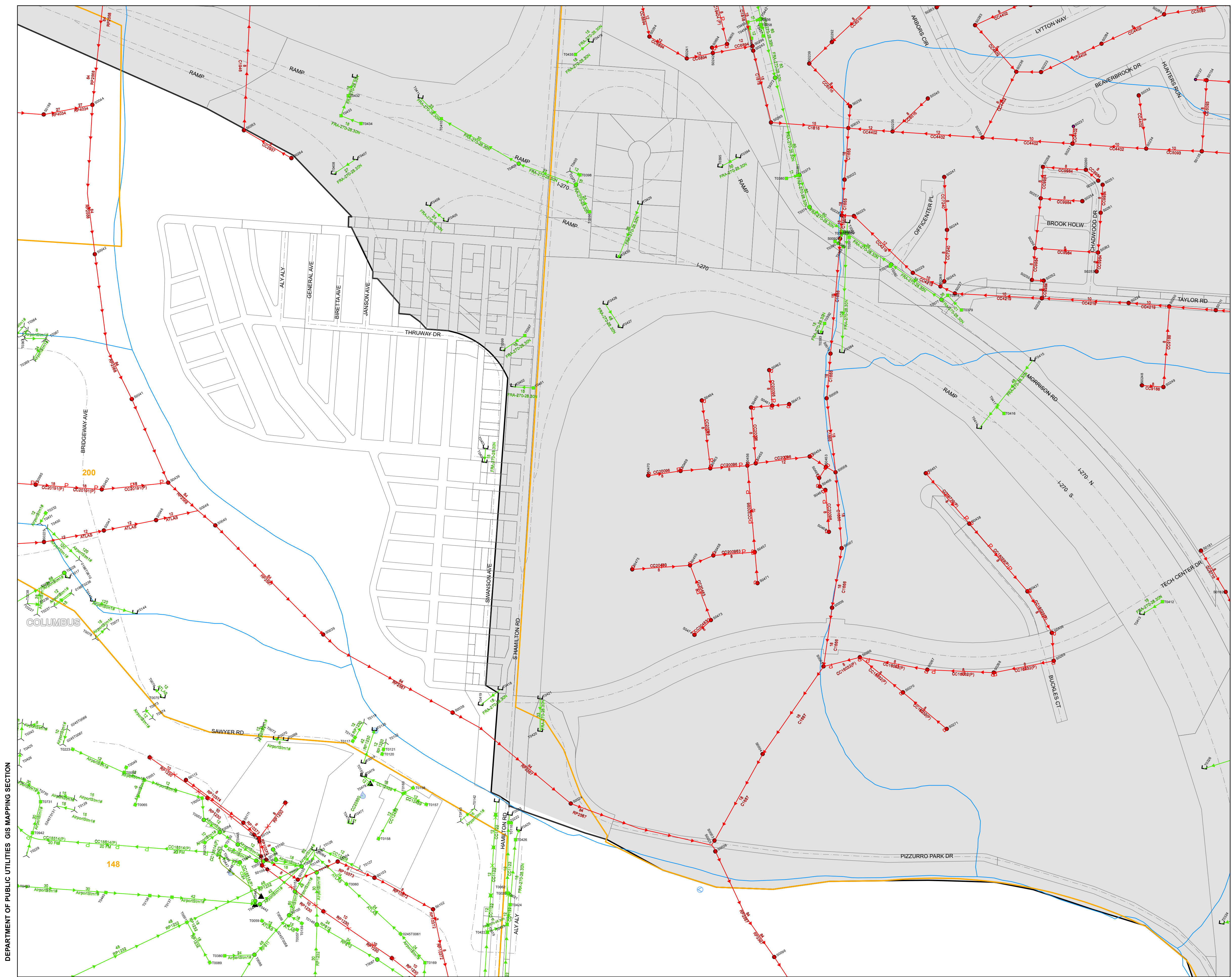
Open Channel

 - NOT City of Columbus
 - County Boundaries

Scale
0 100 200
Feet



While every reasonable effort has been made to ensure the accuracy of this information, it is provided without warranty of any kind, whether expressed or implied. The City of Columbus assumes no liability arising from any use of this information and is not responsible for its accuracy or completeness. Those using this information for any reason are solely responsible for its use and do so at their own risk.



CREATED: 6/10/2025